

# PAPER MÂCHÉ HEADS

## TERMS:

SCORING

FIGURATIVE  
SCULPTURE

ADDITIVE

TROMP L'OEIL

PAPER  
MÂCHÉ

ASSEMBLAGE

PROPORTION

## SUPPLIES:

CARDBOARD

GESSO

X-ACTO KNIVES

MASKING  
TAPE

ACRYLIC  
PAINT

NEWSPAPER

PAPER MÂCHÉ

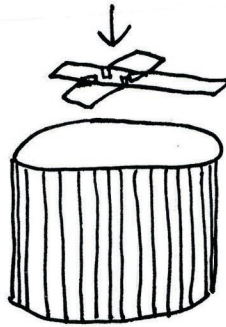


artsydork.com

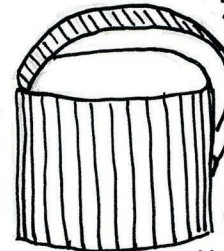
# Instructions



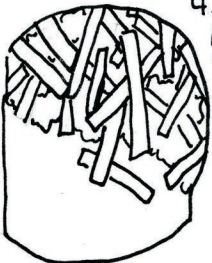
1. SCORE CARDBOARD AND FORM IT INTO A CYLINDER THAT FITS OVER YOUR HEAD, BUT NOT YOUR SHOULDERS. SECURE WITH TAPE.



2. CREATE BRACES WITH INTERSECTING PIECES OF FLAT CARDBOARD. ATTACH TO THE TOP INSIDE LIP OF YOUR CYLINDER WITH TAPE.



3. SCORE A LONG STRIP OF CARDBOARD. SECURE ONE END TO THE TOP OF THE FACE AREA AND SECURE THE OTHER END TO THE LOWER MIDDLE BACK OF THE HEAD. YOU SHOULD TRY TO MIMIC THE CURVE FROM THE FOREHEAD TO THE BACK NAPE OF THE NECK.



4. CRUMPLE NEWSPAPER AND USE IT TO FORM THE OVERALL HEAD SHAPE. SECURE WITH TAPE.



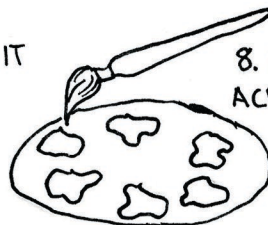
5. USE MARKER TO DIAGRAM THE FACE, THEN CRUMPLE AND TAPE NEWSPAPER TO CREATE THE JAW, BROW LINE, CHEEKS, NOSE, LIPS, EYES, EARS, AND HAIR. ONCE COMPLETE, COVER THE WHOLE FORM IN TAPE.



6. DIP PIECES OF NEWSPAPER (NO BIGGER THAN THE PALM OF YOUR HAND) IN PAPER MÂCHÉ PASTE AND SMOOTH ONTO THE SURFACE OF THE HEAD. MAKE SURE TO OVERLAP AND COAT THE ENTIRE FORM. ALLOW IT TO DRY COMPLETELY.



7. PAINT GESSO OVER THE ENTIRE FORM. ALLOW IT TO DRY COMPLETELY.



8. PAINT APPROPRIATE DETAILS USING ACRYLIC PAINT. START BY PAINTING A BASE COAT OF SKIN AND HAIR. THEN ADD DETAILS USING A TROMP L'OEIL TECHNIQUE TO ACCENTUATE THE FORM.